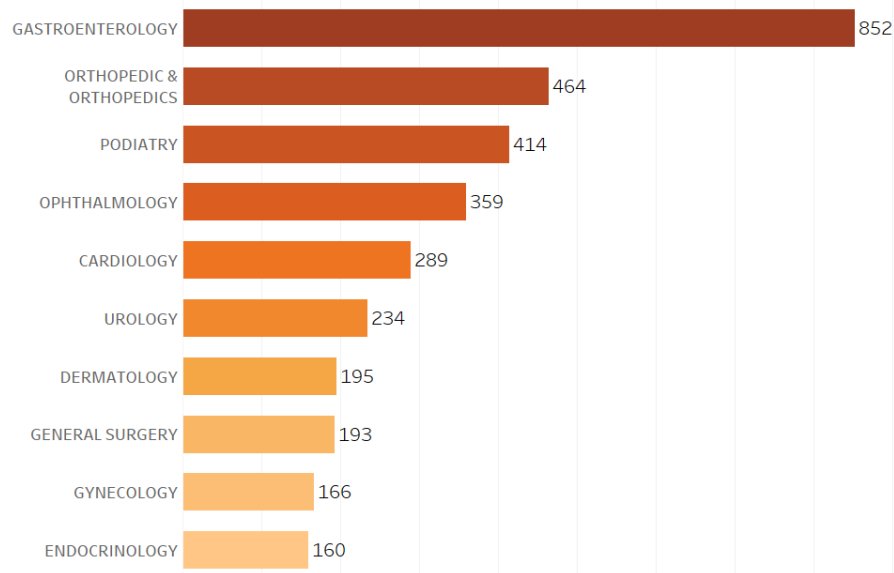


November 2020

Multi-County eConsult Initiative (MCEI) Updates

73,338 eConsults!

Top 10 Specialties for eConsults in September



You and over 100 other specialists have provided care through **73,338 eConsults** from primary care providers since the start of MCEI in 2018, and **4,702 eConsults** this past month alone!

Specialist of the Month

Dr. Kris Storkersen

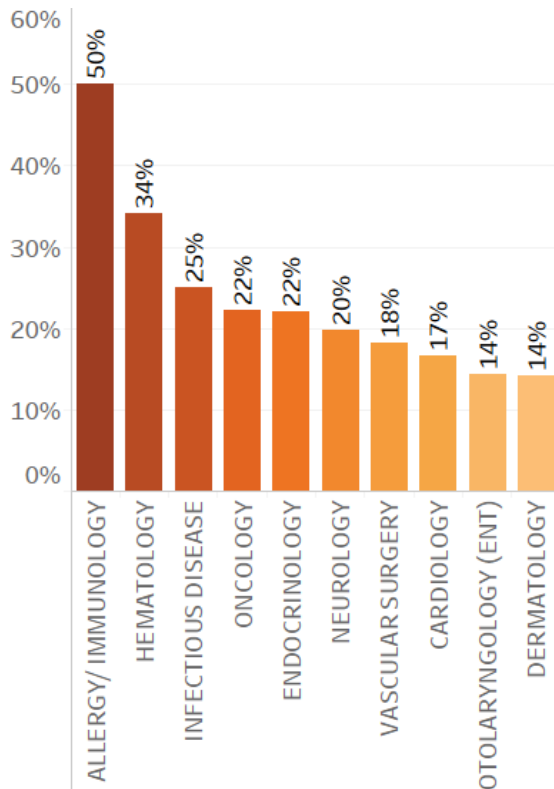
Dr. Kris John Storkersen, MD, is an Ophthalmology specialist in Colton, California. He attended and graduated from the University Of California, Davis School Of Medicine in 1989.

Dr. Storkersen has over 31 years of diverse experience in Ophtalmology. He has submitted a total of **255 Ophthalmology eConsults** from ARMC and SBCSD primary care physicians, and has an **average response time** of less than **1 day!**



Your Month in Review

% eConsults resolved without the need for specialty visit in October (Top 10)



Your efforts are improving patients' timely access to appropriate health care!

You and one hundred other specialists offered your recommendations to primary care providers, coordinating patients' care remotely for **half** of eConsults submitted for **allergy/immunology** services!

You and other MCEI specialist reviewers coordinated with **500+ primary care providers** across **93 clinics** in the Inland Empire via eConsult.

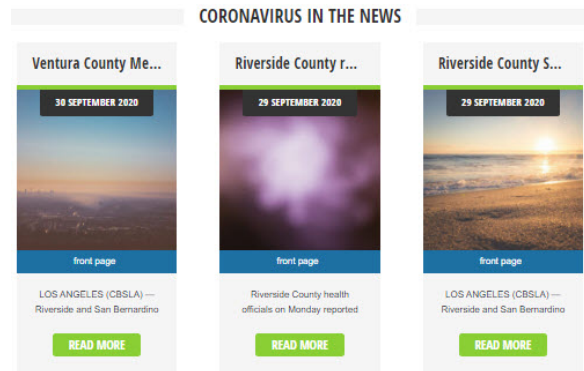
As a result, specialists were able to serve **4,814 patients overall** this month by offering access to specialty recommendations or care via eConsult. Additionally, PCPs provided specialty recommendations and follow-up care plans for **448 eConsults** non face to face, reducing the number of patient trips to see a specialists.

November Announcements & Events

COVID-19 Resource

Keep up-to-date about coronavirus-related developments in the Inland Empire at CovidIE.com (developed by WISE Healthcare for the Inland Empire; not an IEHP-sponsored product).

The website features an assemblage of news releases, links & videos, dashboards, maps and statistics about the San Bernardino and Riverside counties.



compiled from publicly available sources

Call for Quarterly Webinar Speakers



We are always looking for speakers to present an engaging, didactic, and timely topic to primary care providers in the MCEI. If you are interested in learning more about a speaking opportunity, please reach out to Nida Javed at Javed-N@iehp.org

Connect With Us

We are here to support you in any way we can. Our MCEI team offers continuous support and training to physicians and clinical staff, which can be done virtually or in-person.

Support Desk

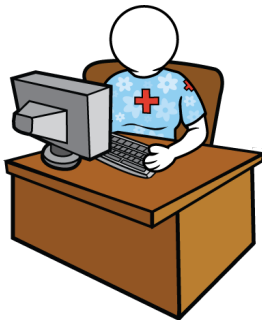


From username and password assistance to technical aid and clarification of workflow processes, Jessica Ayala is here to help!

Submit a ticket via the eConsult platform or call the help desk at **[\(909\) 687-0244](tel:9096870244)**.

She will assist you within 24 hours.

In Person or Virtual Assistance



Schedule appointments for provider and clinical staff introductory and refresher eConsult trainings with our workflow engineers:

Nida Javed | Javed-N@iehp.org | (909) 767-7616

Sarah Taquet | Taquet-S@iehp.org

Joe DeMassimo | DeMassimo-J@iehp.org

Multi-County eConsult Initiative
<https://www.econsultie.com>



Multi-County eConsult Initiative