

December 2020

Multi-County eConsult Initiative (MCEI) Updates

Spark Efficient eConsults



Your eConsult Ideal Dialog Guide

As PCPs and referral coordinators, you submit eConsults and interact virtually with specialists on a near-daily basis for varying cases. Through the eConsult portal, specialists are available for consultations about clinical questions and are also finding opportunities where a clinical case may first be handled by the PCP.

This ideal dialog guide is at your disposal to get specialist recommendations *quickly and efficiently*.

Key Criteria for Quality eConsults



- Craft an effective clinical vignette
 - Explain the clinical scenario
 - Details matter; include relevant test results
- Form a clinical question
 - Conclude with a specific ask (i.e. diagnosis, management)
- Engage in the back-and-forth
 - Timely replies make all the difference
 - "Thank you" goes a long way

[Click here](#) for examples of efficient eConsult dialogs

[Click here](#) for more information about eConsult close codes

Questions? Please contact Jessica Ayala at the help desk: (909) 687-0244.

A new [eConsult Ideal Dialog Guide](#) is now at your disposal.

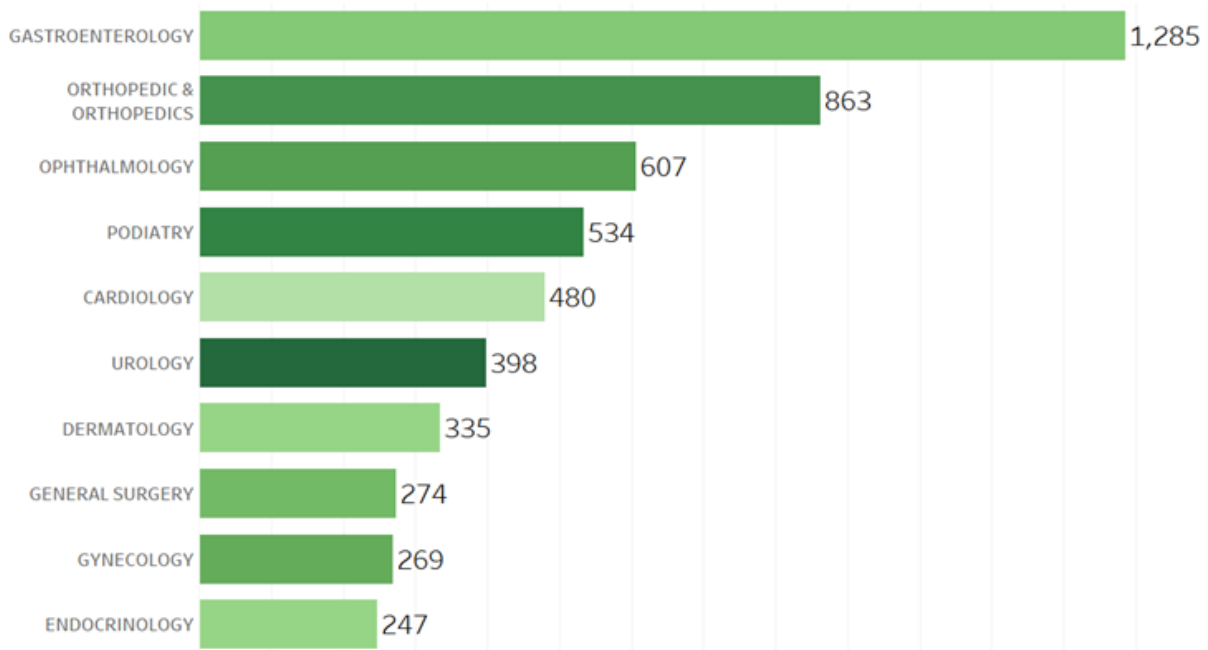
Obtain specialist recommendations in the *quickest, most efficient* manner possible!

[Click here](#) to read more about:

- Key Criteria for quality dialogs
- Examples of successful dialogs
- Insights on eConsult close codes

83,780 eConsults!

Top 10 Specialties for IEHP eConsults in November



A total of **94 clinics** from IEHP, Arrowhead Regional Medical Center

(ARMC), and Riverside University Health System (RUHS) have processed **83,780 eConsults** since the start of MCEI.

All 67 IEHP community clinics play a major role, having submitted **1,632 eConsults** in November and **32,508 eConsults** since the program's start.

Meet Your Specialist Reviewer

Dr. Andrew Lowe, Anticoagulation

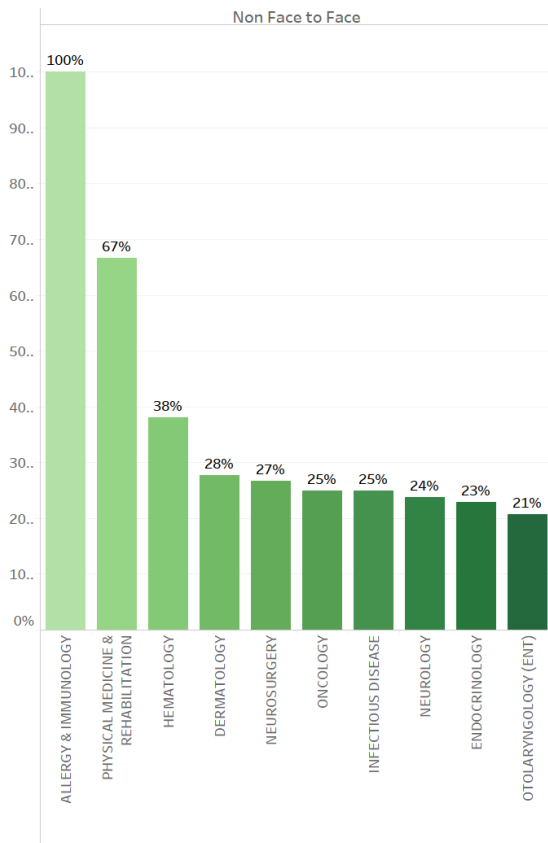
Dr. Andrew Lowe, PharmD serves as Clinical Director and Pharmacy Practice Residency Program Director at Arrowhead Regional Medical Center (ARMC) in Colton, California. He has maintained a clinical pharmacy practice focusing on pain management and the prevention of prescription drug abuse.



Dr. Lowe received his PharmD from UC San Francisco School of Pharmacy and completed a Pharmacy Practice Residency at San Bernardino County Medical Center.

Your Month in Review

% of IEHP eConsults resolved without the need for specialty visit in November (Top 10)



Your efforts are improving patients' timely access to appropriate health care!

IEHP physicians received specialists' recommendations remotely and coordinated patients' care, with **allergy and immunology** services being the top specialty!

You and 500+ other physicians across 94 IEHP clinic sites coordinated with 100 specialists via eConsult this month.

As a result, IEHP direct PCPs were able to serve **1,363 patients overall** this month by gaining access to specialty recommendations or care via eConsult. Additionally, PCPs provided specialty recommendations and follow-up care plans for **196 eConsults**, which were resolved without the need for a specialty visit.

Welcome Aboard!

- Workflow Engineers Nida Javed and Sarah Taquet trained **Dr. Andrew Lowe** to answer **Anticoagulation Specialty** eConsults from IEHP primary care providers.

December Announcements & Events

More Clinics to Come!

The MCEI Team is coordinating outreach to **23 new IEHP community clinics!**

Call for Quarterly Webinar Speakers



We are always looking for speakers to present an engaging, didactic, and timely topic to other primary care providers in the MCEI. If you are interested in learning more about a speaking opportunity, please reach out to Nida Javed at Javed-N@iehp.org

Connect With Us

We are here to support you in any way we can. Our MCEI team offers continuous support and training to physicians and clinical staff, which can be done virtually or in-person.

Support Desk

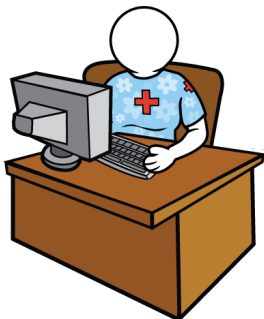


From username and password assistance to technical aid and clarification of workflow processes, Jessica Ayala is here to help!

Submit a ticket via the eConsult platform or call the help desk at [\(909\) 687-0244](tel:9096870244).

She will assist you within 24 hours.

In Person or Virtual Assistance



Schedule appointments for provider and clinical staff introductory and refresher eConsult trainings with our workflow engineers:

Nida Javed | Javed-N@iehp.org | (909) 767-7616

Sarah Taquet | Taquet-S@iehp.org

Joe DeMassimo | DeMassimo-J@iehp.org
